

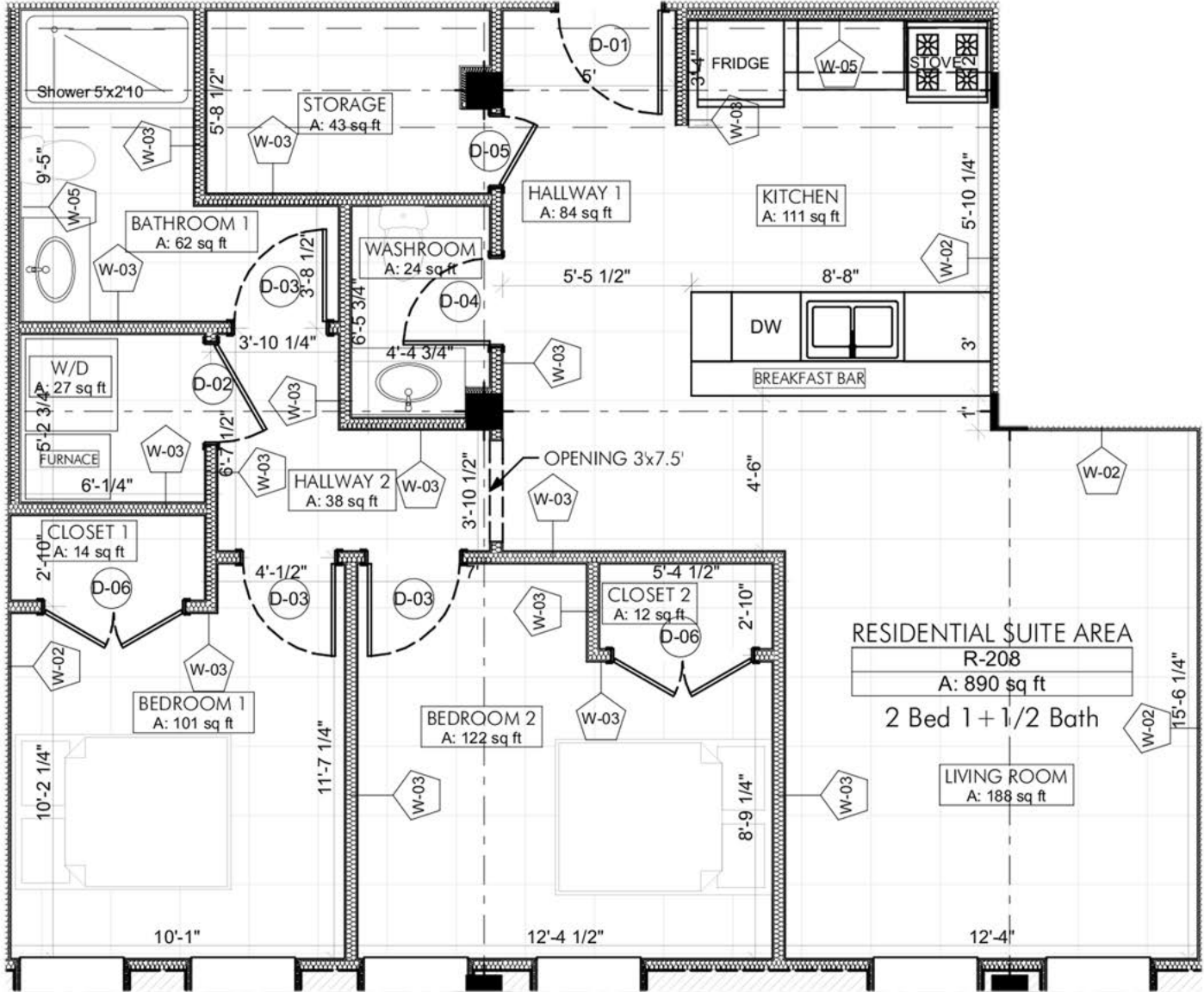


384 Rogers Street

LUXURY RENTAL

CLIFTON

2 Bed + 1 + 1/2 Bath
890 sq.ft.
208,308,408,508



TVMGROUP
Integrated Real Estate Company

Sizes and Specifications subject to change without notice. E. & O.E. Actual usable space may vary from any stated floor area. All dimensions are approximate and are subject to normal construction variances. Measurements of the room set forth on any floor may be taken at the widest points of each given room (as if the room were a perfect rectangle) without regard for any cutouts or cabinetry. Floor measurements were calculated on the middle floor of typical floor plates. Balcony and Column locations may vary per elevation feature. Balconies may be different on varying levels. Areas marked with dotted lines are dropped ceiling areas. Additional ceiling areas may be dropped to accommodate bulkheads or for any other reason required by the Vendor